

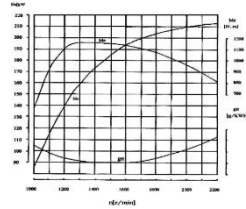
**SINOTRUK**



**MODEL HOWO 7 84336 TIP**  
**8×4 TIPPER**

## ENGINE

Model	SINOTRUK WD615.69
Type	Euro II Emission Standard 9.726L
Displacement	195 g/kWh
Fuel consumption	336hp( 247Kw) at 2200 rpm
Maximum output	1350Nm at 1300~1600 rpm
Maximum torque	SINOTRUK WD615.69



## TRANSMISSION

Model	SINOTRUK 19709XST
	9 Speed Manual Synchronesh
Ratio	15.280; 12.469; 8.792; 6.619; 4.375 2.850; 2.010; 1.410; 1.000; 14.058®

## CLUTCH

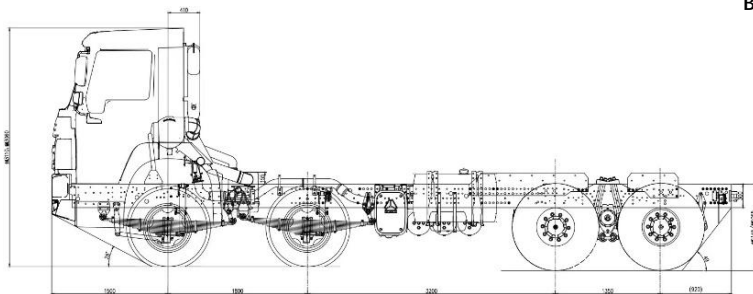
Diameter	430 mm
Type	Single Plate
Operation	Hydraulically-Air Assistance

## PROPELLER SHAFT

Type	Double Universal Joint Propeller Shaft with Gear-shaped Coupling Flange
------	-------------------------------------------------------------------------------

## AXLE

Front Axle	Sinotruk VGD95 Double T-cross Section Beam
Rear Axle	Sinotruk MCP16 Hub Reduction
Ratio	5.26



## CHASSIS

Frame	U-profile Parallel Ladder Frame
Suspension	Front 10 Semi-elliptic Leaf Springs Rear 12 Semi-elliptic Leaf Springs Semi-elliptic Leaf Springs

## STEERING

Model	ZF8098
Operation	Hydraulically-air Assistance
Ratio	22.2-26.2

## BRAKES

Service	Dual Circuit Compressed Air Brake
Parking	Spring Energy on Rear Axles
Auxiliary	Exhaust Brake WABCO ABS

## WHEELS & TYRES

Rims	9.00x22.5, 10 Hole-steel
Tyres	315/80r22.5 Tubeless

## DRIVER'S CAB

Cab Control	Hydraulically Tiltable to The Front
Seating	Adjustable Air Driver's Seat
Type	Daily Cab; Fully Floating Suspension; Stereo Radio/USB Interface

## BODY

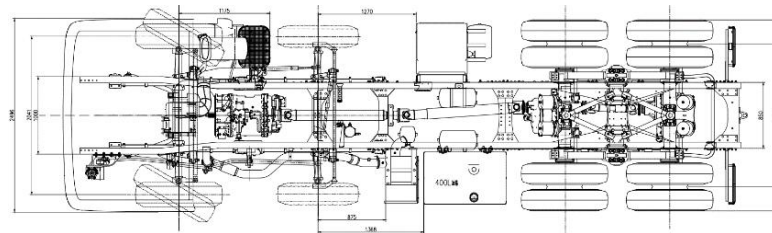
Size	6300X2300X1400 (mm)
Material	Hardox 450 Steel
Thickness	8 mm Bottom; 6 mm Side Wall

## FUEL TANK

Capacity	400L
Material	Aluminum

## ELECTRICS

Operating Voltage	24 V, Negative Grounded
Starter	24 V, 7.5 Kw
Alternator	28 V, 1540 W
Batteries	2 X 12 V, 165 Ah



## DIMENSIONS IN MM

Wheel base	1800+3000+1350
Front wheel track	2022
Rear wheel track	1830
Front overhang	1500
Rear overhang	2095
Approach angle (°)	19
Departure angle (°)	18
Overall length	8947
Overall width	2550
Overall height	3410
Cab Length	170
Ground Clearance	300
Chassis Outer Width	850
Chassis Inner Width	810
Cab to End of Chassis	6850

## MASS IN KG

Vehicle Tare Mass	16040
Front Axle Tare Mass	8380
Rear Axle Tare Mass	7660
Manufacturer's Gross Vehicle Mass	35000
Manufacturer's Gross Combination Mass	50000
Manufacturer's Gross Front Axle Mass	18000
Manufacturer's Gross Rear Axle Mass	26000
Permissible Gross Vehicle Mass	33400
Permissible Gross Combination Mass	50000
Permissible Front Axle Mass	15400
Permissible Rear Axle Mass	18000

## PERFORMANCE

Maximum driving speed (km/h)	90
Maximum gradeability (%)	33
Minimum turning circle (m)	21.8

## MODEL HOWO 7

## 84336 TIP

All Rights Reserved! The manufacturer reserves the right of technical alternation/change for better improvement without prior notice!